

October 17, 1925

# Motion Picture News

Reg. U. S. Patent Office

## What a Quartet of Pictures for October

Oct. 4

*A Riot!*

Hobart Henley's  
**EXCHANGE OF WIVES**

Lew Cody  
Eleanor Boardman

Oct. 11

*Star Combination!*

NORMA SHEARER  
LON CHANEY in  
**THE TOWER OF LIES**

A VICTOR SEASTROM  
production

Oct. 18

*Front Page Picture!*

RAMON NOVARRO in  
**THE MIDSHIPMAN**

directed by  
Christy Cabanne

Oct. 25

*A Big One!*

MARION DAVIES in  
A Monta Bell production  
**LIGHTS OF OLD  
BROADWAY**

with Conrad Nagel  
A Cosmopolitan Production

**PRODUCED BY THE SHOWMEN OF  
METRO-GOLDWYN-MAYER**

Member of Motion Picture Producers and Distributors of America, Inc.—Will H. Hays, President

Entered as second-class matter January 31, 1924, at the Post Office at Albany, New York,  
under the act of March 3, 1879

Published Weekly—\$2.00 a year

PRICE, 20 CENTS

Vol. XXXII No. 16

Albany

— Los Angeles

— New York

— Chicago





# CONSTRUCTION & EQUIPMENT DEPARTMENT



## Chapman's Alician Court Theatre is Model

*California House Elaborately Decorated and Appointed; Has Unusual Features*

**C**HAPMAN'S Alician Court theatre at Fullerton, Orange county, Calif., recently opened, represents the final word in architectural novelty and beauty as well as in modern equipment. Erected at a total cost, with the ground, of close to half a million dollars, the structure stands on the national highway between Canada and Mexico, where it is the cynosure of the eyes of thousands of motorists.

The entrance is a large court, near the center of which grows a mammoth fan-palm. Alternating with the arches on the sides are the attraction boards, each high-lighted, and shrubbery. Near the rear is a fountain constantly playing into a bed of lillies and ferns. Up one side runs a stone stairway connecting with a balcony which is used as one of the exits from the mazzanine and balcony proper.

The flasher announcement equipment is at one side while a single illuminated court panel at the rear announces only the star of the current attraction. On the roof of the stage is a triangular sign with flasher system containing close to nine hundred lamps. At the rear of the court entrance is a huge

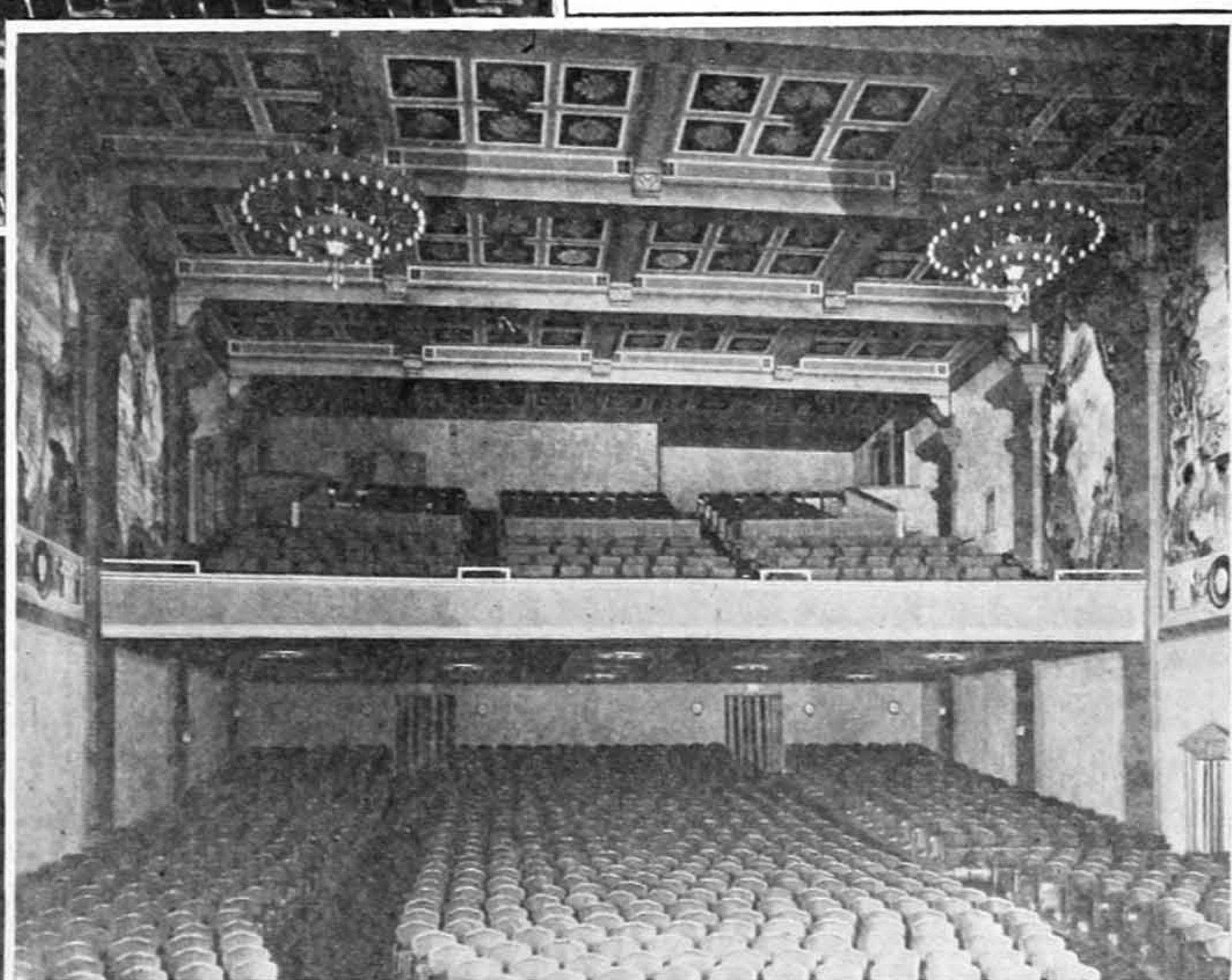
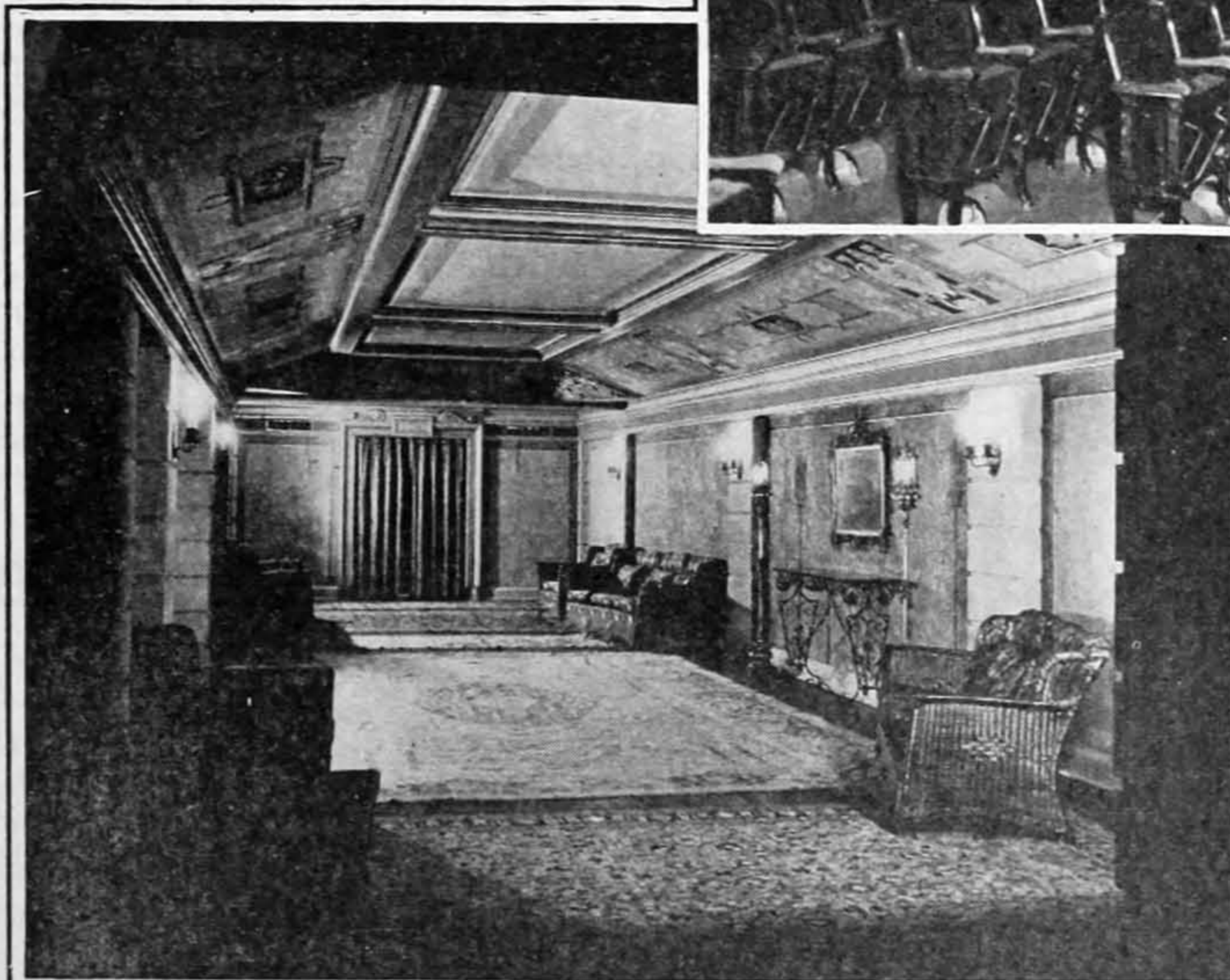
terra cotta urn with smoke-effects and also an old Greek theatrical mask with color illuminated eyes and mouth.

Through quaint, massive doors of old iron effect, one enters the foyer with its cement floor, squared and stained. Im-

ported rugs of rare pattern cover this room as well as that of the mezzanine above, some of them being fifteen feet square. The ceiling of the foyer is a marvel of decorating, blue and gold being the predominating tones. Stone benches and Italian table and lamps grace this room and further light is obtained from eight highly distinctive torchiers.

Two large entrances lead to the auditorium proper, the doorways being of Italian marble framed in Italian-colored velour curtains. On each side of the auditorium wall are three great mural paintings, depicting early California. A battery of colored lights plays on these canvasses from hidden niches in the ceiling, and this color scheme is changed constantly during the performance. The ceiling is laid off in Italian red and black squares while two gigantic chandeliers of original pattern hang midway back from the proscenium.

Almost every section of the auditorium can be illuminated by itself by the touch of a button, a lion's head here and an urn there, and other symbolical objects can be brought out into relief instantly. The entire lighting equipment is on



Three views of Chapman's Alician Court theatre, Fullerton, Orange County, Calif. showing, top, several of the mural paintings, left, a view of the mezzanine lounge and right, a view of the auditorium.



## Chapman's Alician Court Theatre is Model

*(Continued from preceding page)*

a dimmer system with corresponding superb effects. The 1,000 opera chairs run from 22 to 24 inches in width.

A grand stairway runs to the mezzanine with its dozen or more easy chairs and lounges, fireplace with glowing coals, phones, fountains, Oriental rugs and other attractions. From this mezzanine, the balcony and loge section are reached by easy ramps. The loges are in the front of the balcony and consist of two hundred wired wicker single and double chairs with massive cushions. Back of these is the balcony proper.

The stage is thirty-two feet in depth and sixty-five feet wide with a proscenium sufficiently large and decorative to do justice to the finest theatres in the country. Ten dressing rooms, completely equipped with hot and cold water, shower baths, ventilating fans, individual wash bowls, individual stoves, etc., and a large club room with ironing board, sewing machine, lounges, etc., are beneath the stage. The latter is equipped to handle the largest road shows and the lighting system is extensive and modern. An automatic sprinkler system protects the entire stage and dressing rooms.

An orchestra is used on vaudeville road show days and for the picture programs, the theatre has a mammoth Marr and Colton organ with Tim Crawford, one of the cleverest young fellows in the business, at the console. The organ has one hundred stop controls and is in six different sections. An

echo organ hidden midway back in the ceiling carries five ranks of pipes. This is the only echo in this part of the state.

Power's projectors with mirror reflectors are used in the booth which is in charge of Richard L. Martin.

Three mammoth gas furnaces furnish heat for the theatre, all automatically controlled. For ventilation, a ten foot fan drives the air through a large chamber shot through with sprays of cold water. This air is forced upwards and has an egress from under each seat in the entire house. The temperature in the hottest months never runs above 69 degrees. An automatic temperature regulator is one of the equipments of this amusement palace.

In conjunction with the theatre itself is the Fullerton branch of the famed Mary Louise cafe of Los Angeles, under direct supervision of the proprietors, Mr. and Mrs. Will C. Harris.

Chapman's Alician Court theatre is named after Alice Chapman, wife of C. Stanley Chapman, the builder and owner. Mr. Chapman has in this theatre, realized an ideal of years and his enterprise well merits the support that this entire section of the country is bestowing upon it. The Orange Belt Theatres, Inc., is the operating company, controlling also the Rialto theatre in Fullerton. Harry Lee Wilber is managing director of both houses. Meyer & Holler, who erected Grauman's Egyptian theatre at Hollywood, were the architects of Chapman's. The mural paintings were the work of C. F. Brunckhorst.