

HUDSON THEATRE



DETAIL OF PROSCENIUM ARCH,

ISRAELS & HARDER
Architects

By the courtesy of Wm. B. Harris, Manager and
owner, we are able to present the photo-
graphs of this theatre.

THE HUDSON THEATRE,

Forty-Fourth Street, Between Broadway and Eighth Avenue.

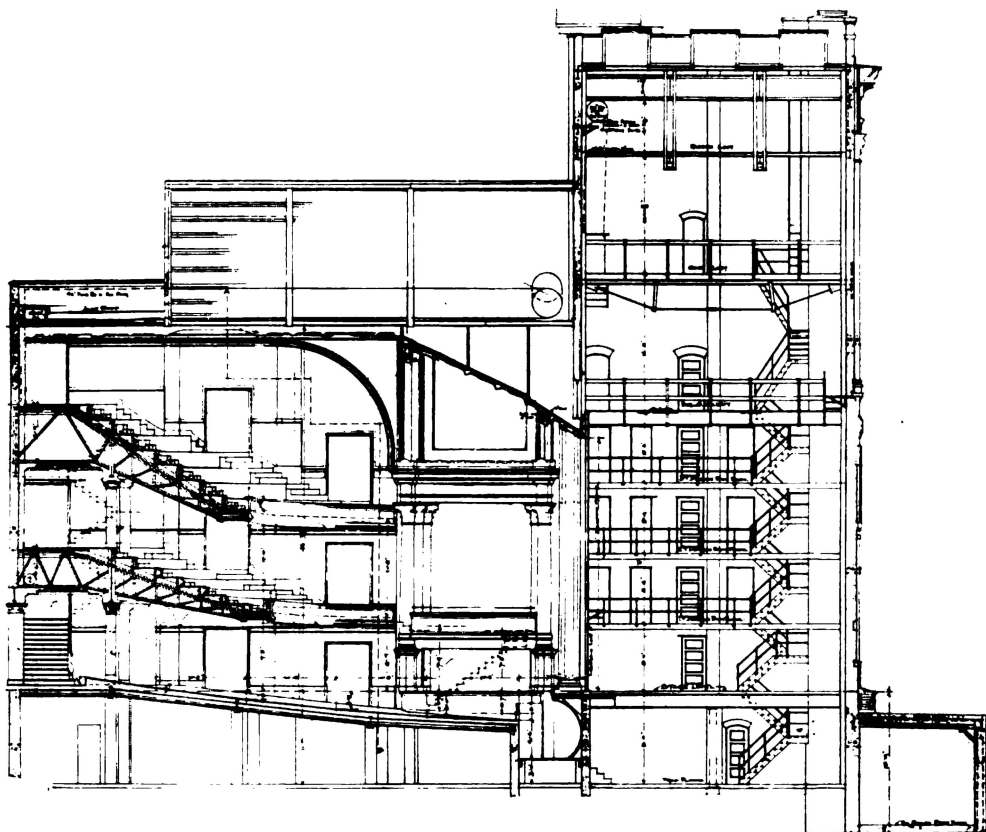
THIS theatre, having its main entrance and foyer on 44th Street, extends through and backs upon 45th Street, where the main part of the structure is. The exterior is unpretentious, but as soon as we enter, the elegance of the building becomes apparent. The vestibule and lobby are exceptionally spacious and are richly furnished in Verde Antique marble, with a coffered ceiling studded with incandescent bulbs.

The foyer, which follows, is a contrast from the brilliance of the lobby, for the illumination, planned by the late L. B. Steiringer, is on the concealed lighting plan and produces very soft effects, suffused through the domes of

Tiffany glass that form the ceiling. The concealed lighting of the auditorium is most effective also.

The plans and especially the elevation of this theatre are interesting, as they show the construction of the cantilever balconies, and the careful planning of the site lines.

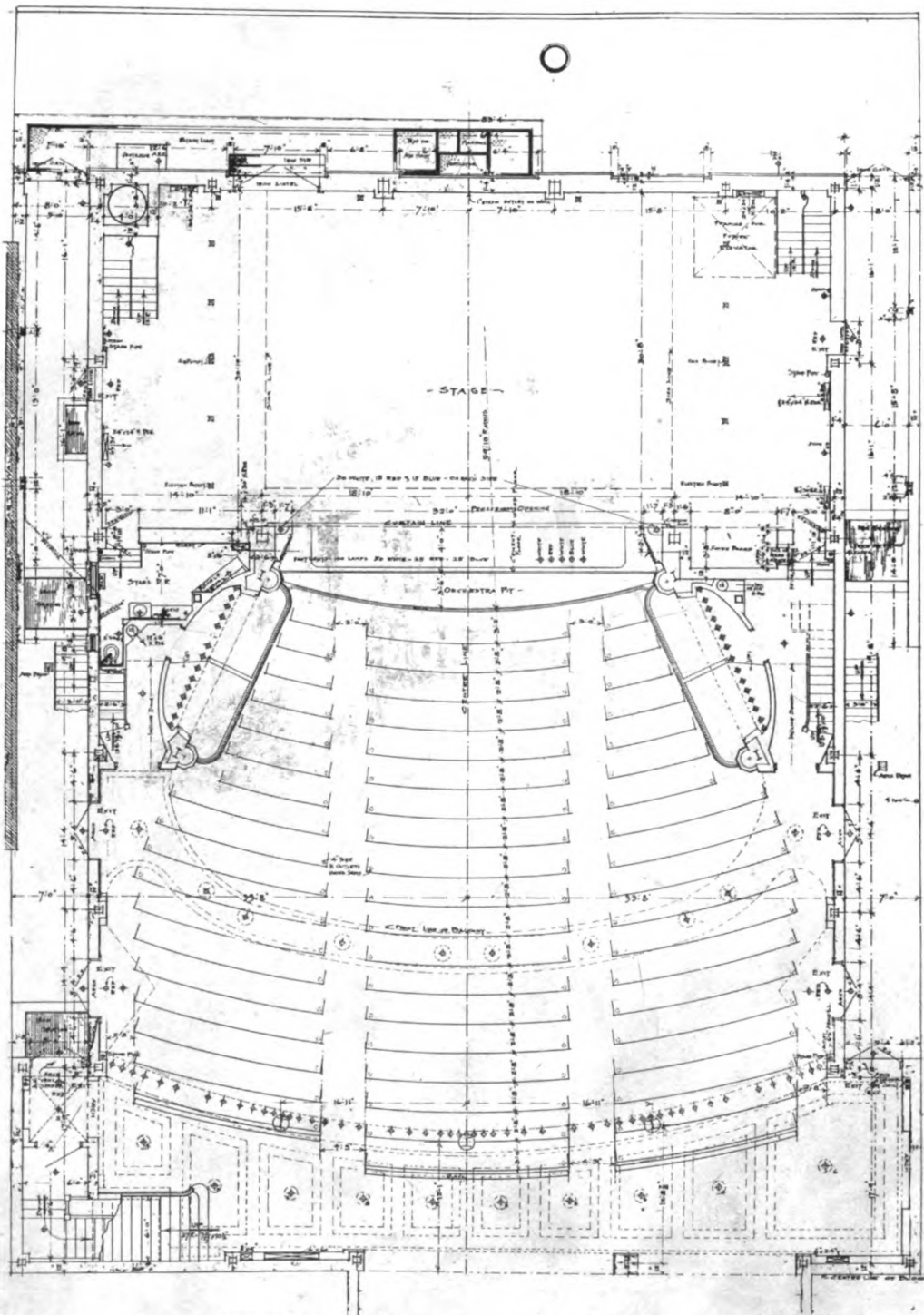
Twenty-eight exits, an unusual number, guarantee speedy and safe egress for patrons. The building itself is fire-proof throughout, and a complete sprinkler system is an added precaution. The ventilating system is very perfect and means for cooling the air, as well as heating it, are provided to meet the conditions of the weather.



SECTION OF HUDSON THEATRE.

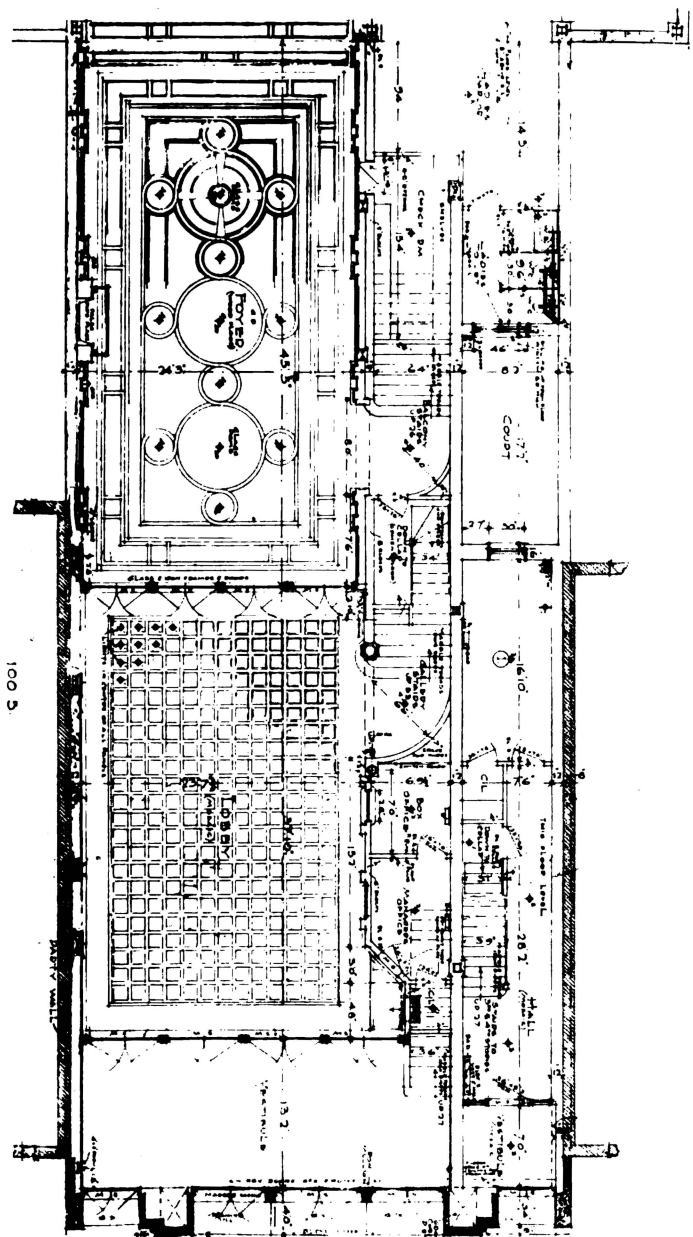


MAIN ENTRANCE ON 44TH STREET, HUDSON THEATRE.



ORCHESTRA FLOOR PLAN, HUDSON THEATRE.

(Stage backing on 45th Street.)

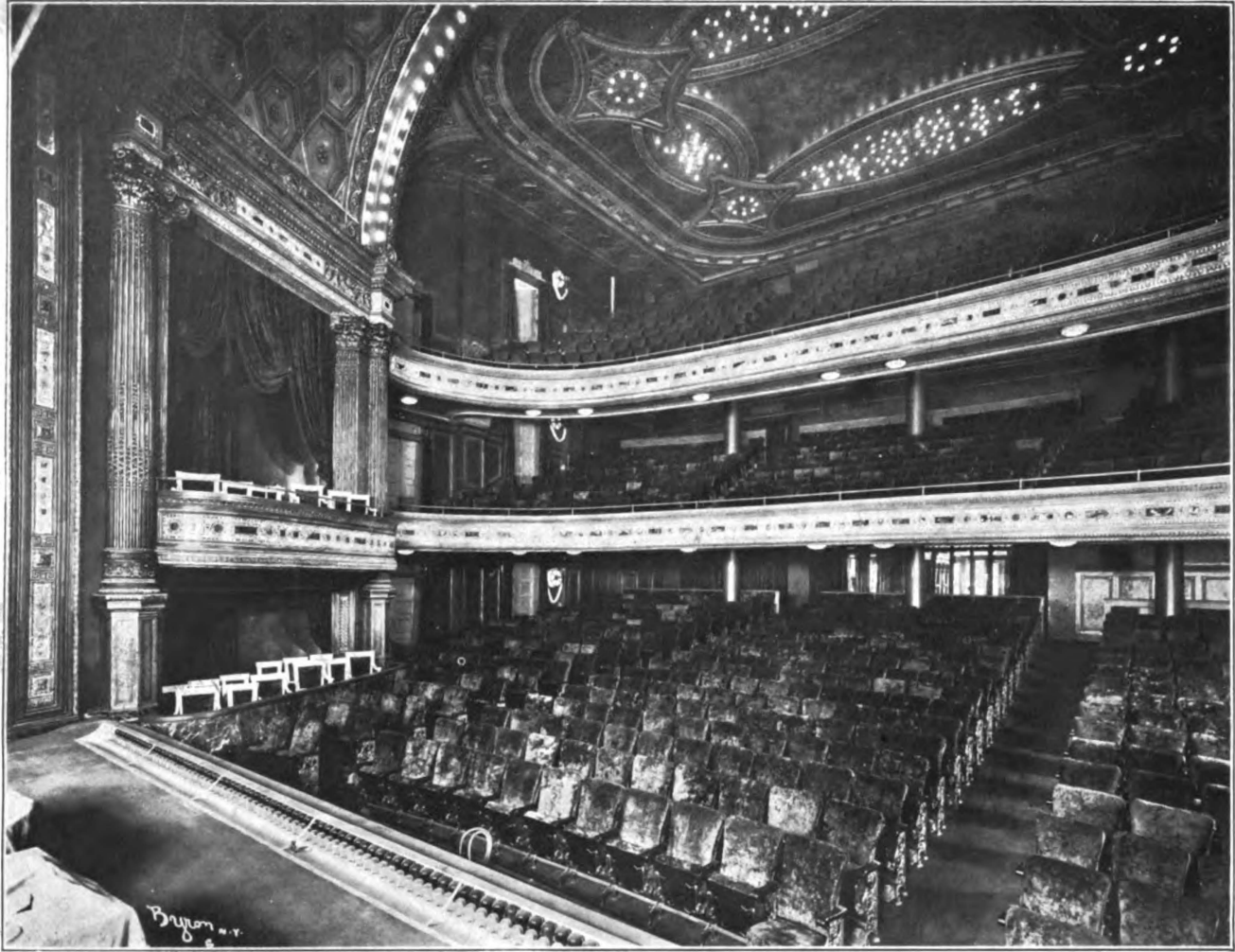


100 S

PLAN OF ENTRANCE FROM 44TH STREET.



LOBBY SHOWING BOX OFFICE AND COFFERED CEILING, HUDSON THEATRE.



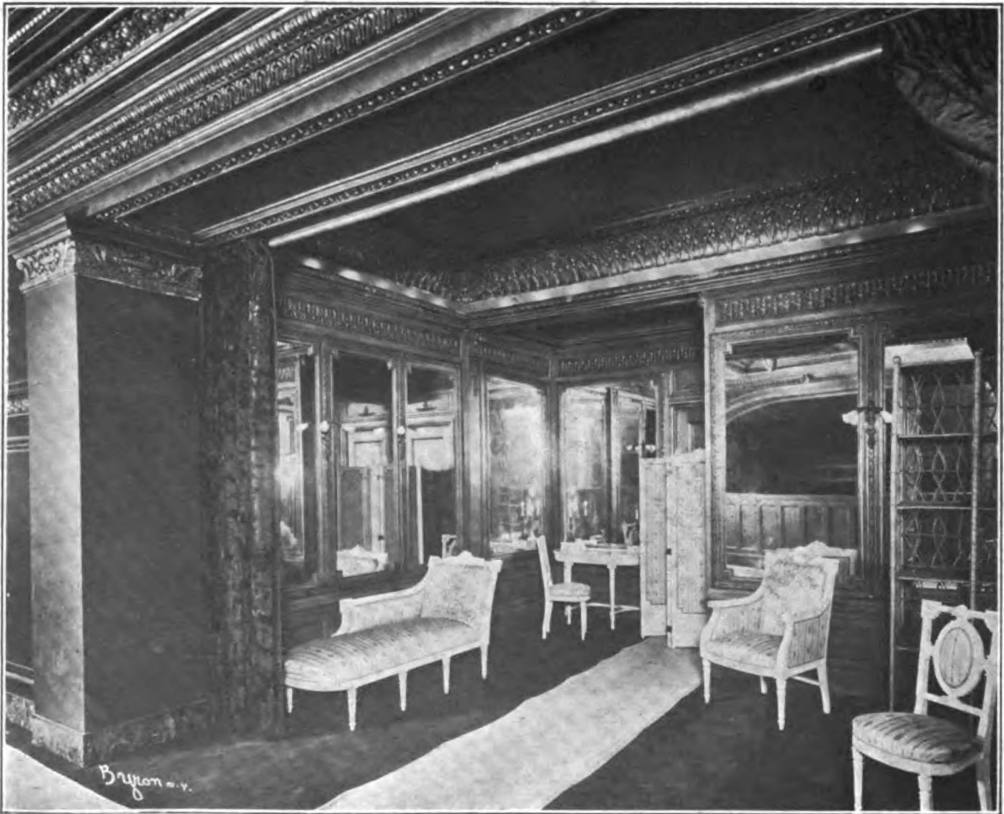
AUDITORIUM, HUDSON THEATRE.



BOXES SHOWING MOSAIC GLASS BORDER, HUDSON THEATRE.



REAR OF AUDITORIUM, HUDSON THEATRE.



LADIES' ROOM, HUDSON THEATRE.