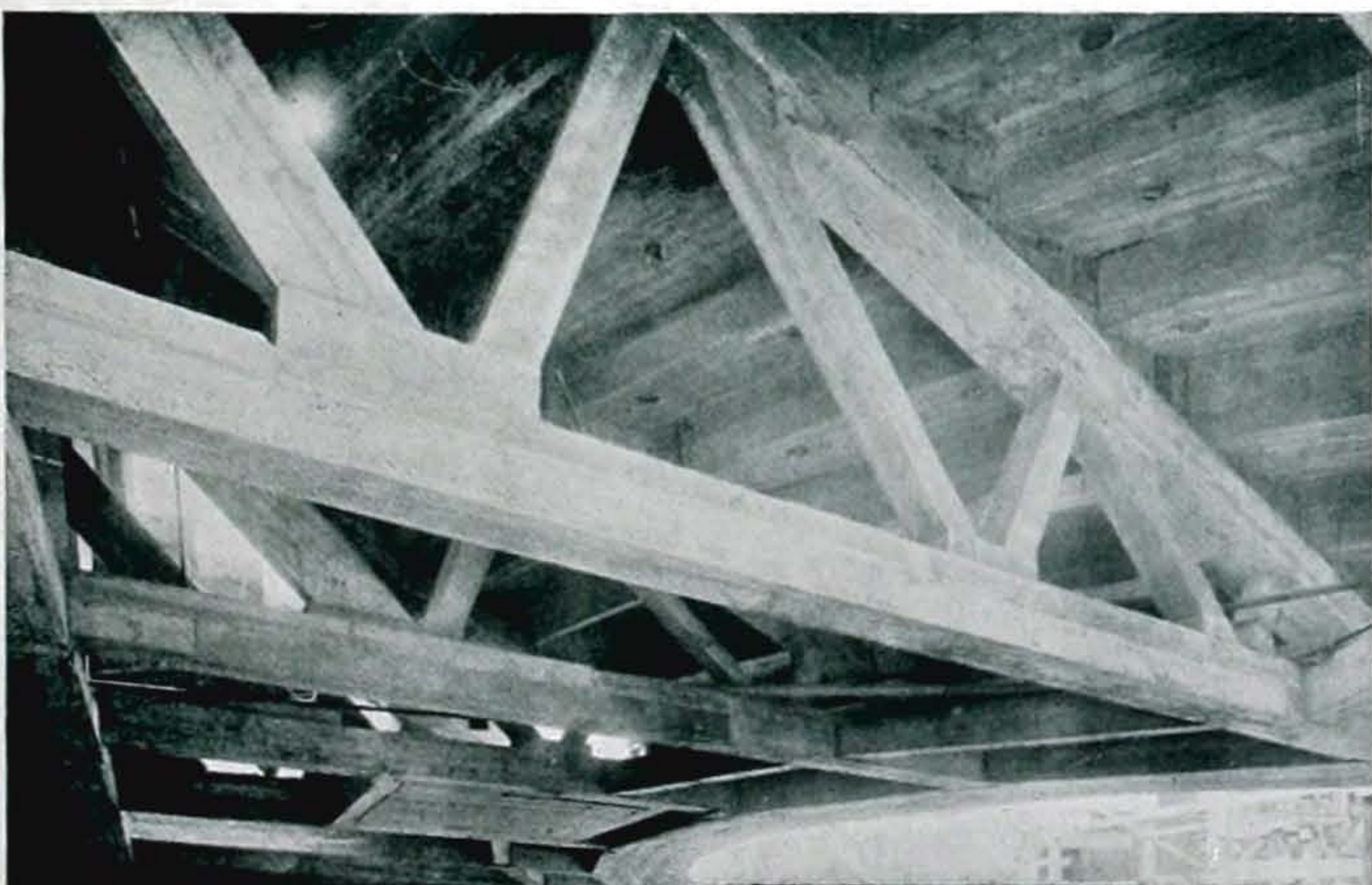
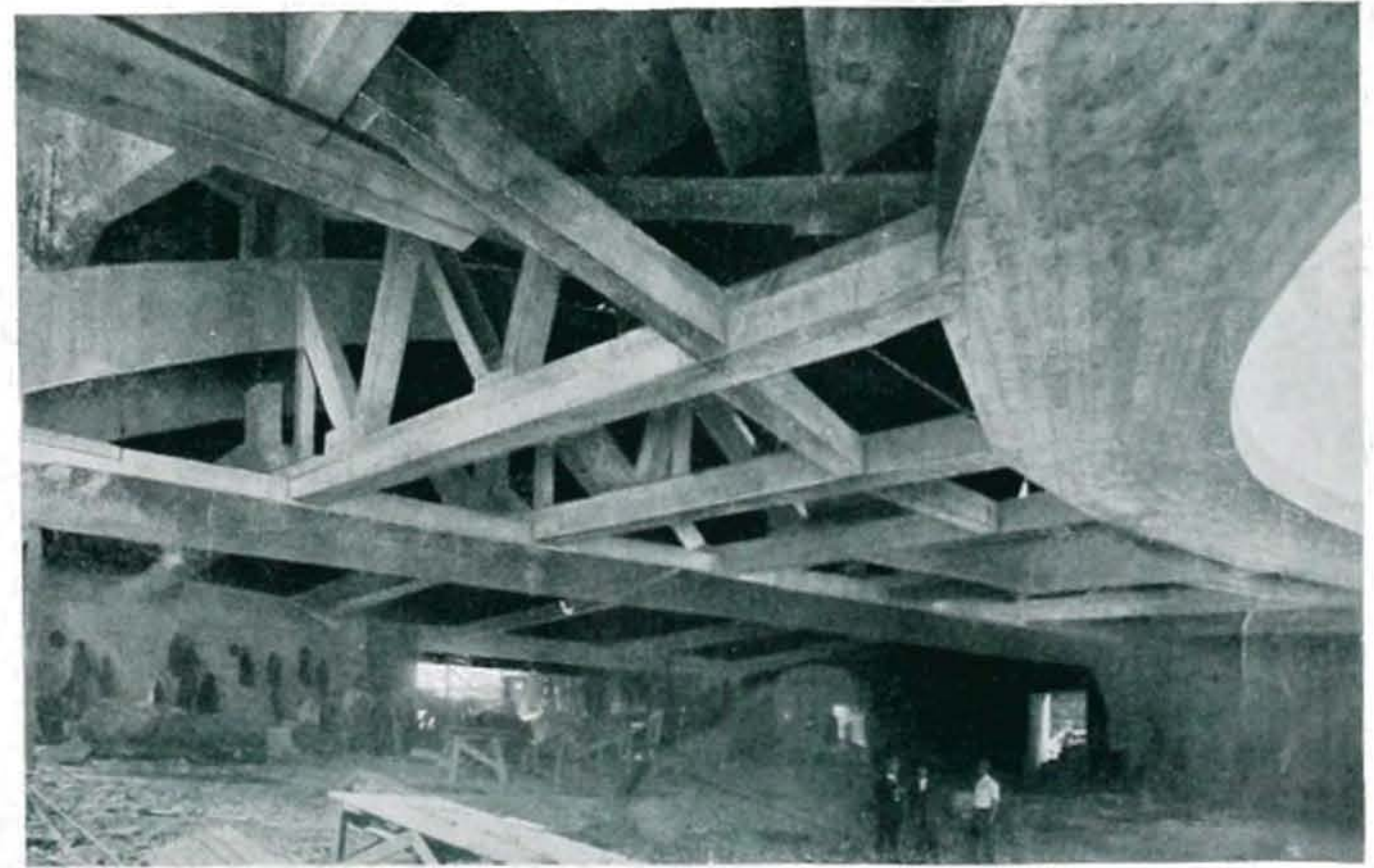


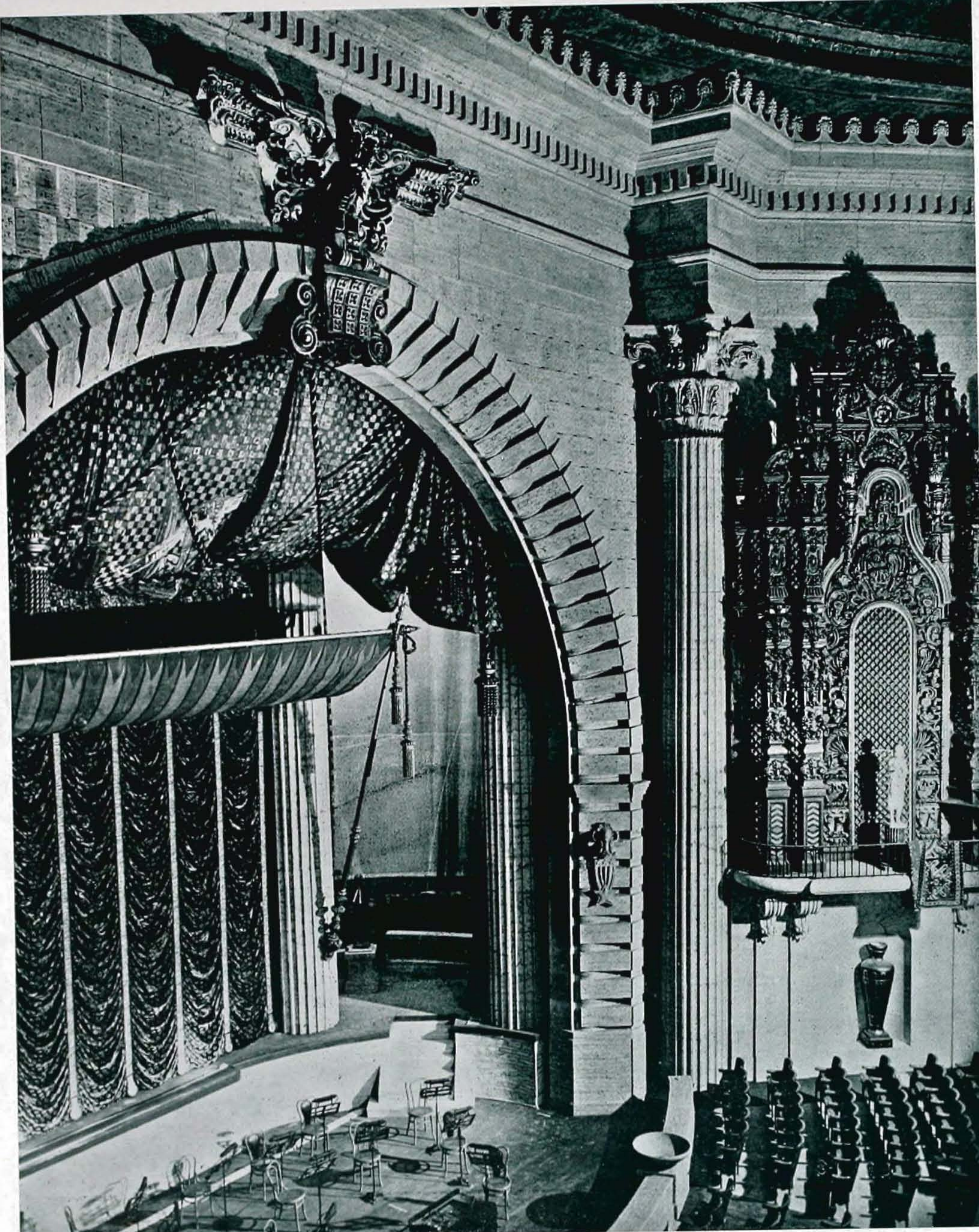
VIEW LOOKING TOWARDS BALCONY



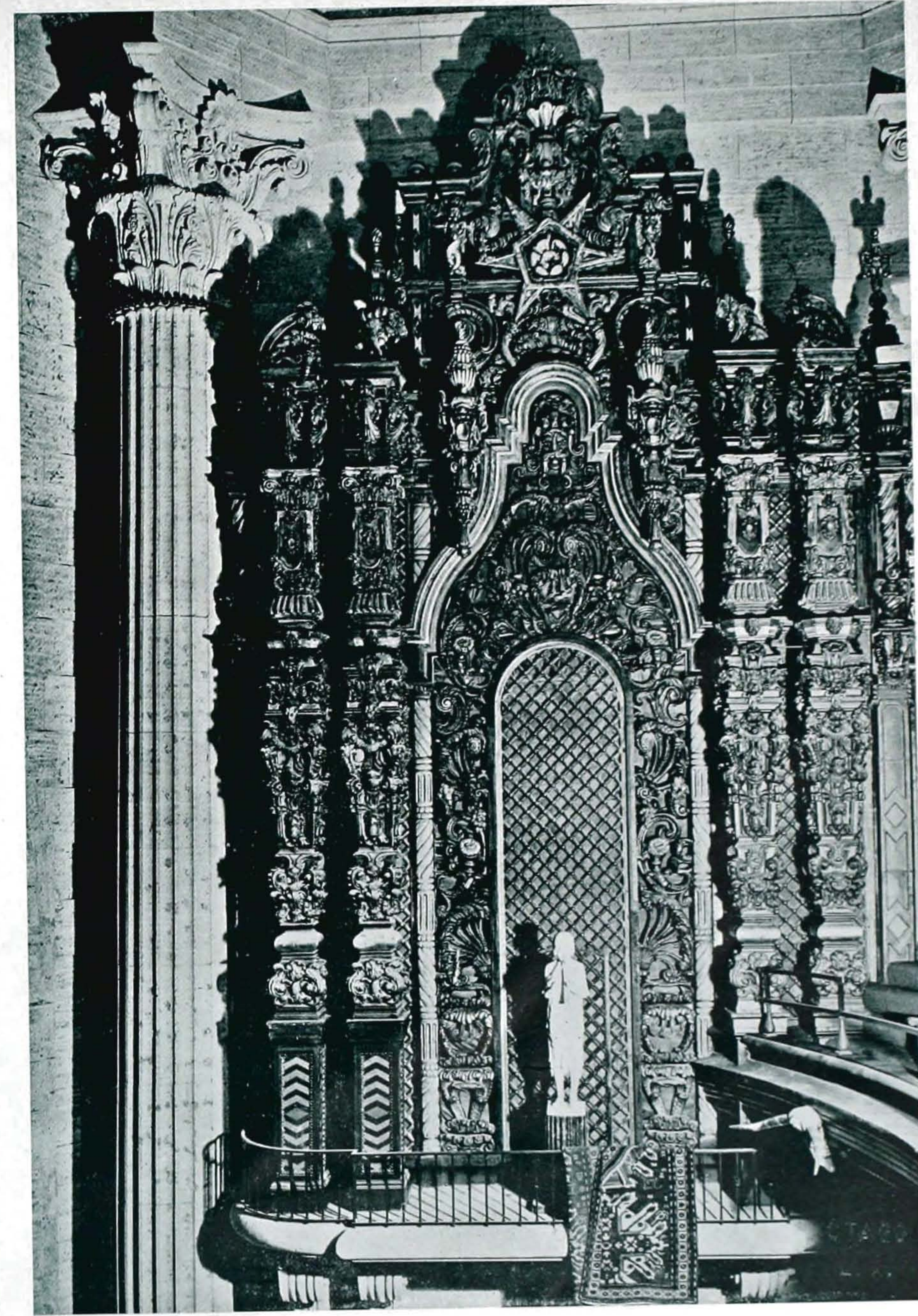
BALCONY CONSTRUCTION



ARCH AND CANTILEVERS

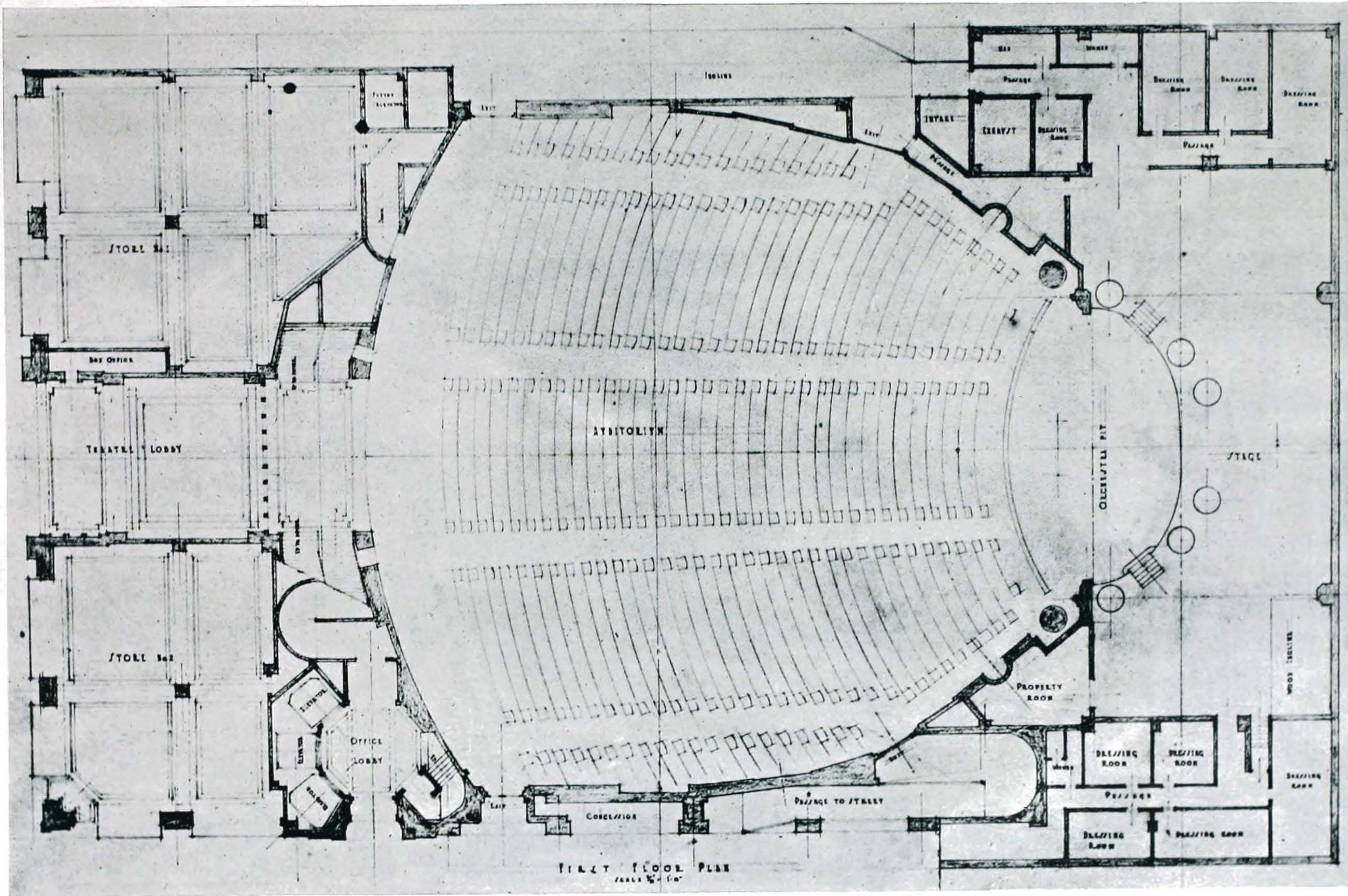


VIEW TOWARD PROSCENIUM ARCH AND ORGAN SCREEN
SHOWING ORCHESTRA PIT




ORGAN SCREEN

GRAUMAN'S THEATRE, LOS ANGELES
A. C. MARTIN, Architect



FIRST FLOOR PLAN
SCALE 1/8" = 1'-0"

FIRST FLOOR PLAN
GRAUMAN'S THEATRE, LOS ANGELES
A. C. MARTIN, Architect



Digitized by the Internet Archive
in 2010 with funding from
San Francisco Public Library