



*Auditorium, North Park Theatre, San Diego, Calif.*

## A RECENT ADDITION TO THE WEST COAST CHAIN

### *North Park Theatre in San Diego Designed for Sound Picture Presentations*

**W**HAT is said to be the nation's first motion picture theatre to be specially designed and constructed from its foundations up for the showing of sound, synchronized and talking pictures, is the newly finished North Park Theatre, in the Fox West Coast chain of motion picture houses in San Diego.

In facade and decorative motif the theatre follows closely the Spanish renaissance in style. The exterior trim of cast cement carries out the decorative scheme in bas relief. The spacious lobby is trimmed in veined quarry tile, adding a note of color.

An enclosed inner lobby opens into a tastefully decorated foyer - lounge, from which patrons enter directly into the auditorium. The mezzanine landing is provided with additional lounging and rest rooms.

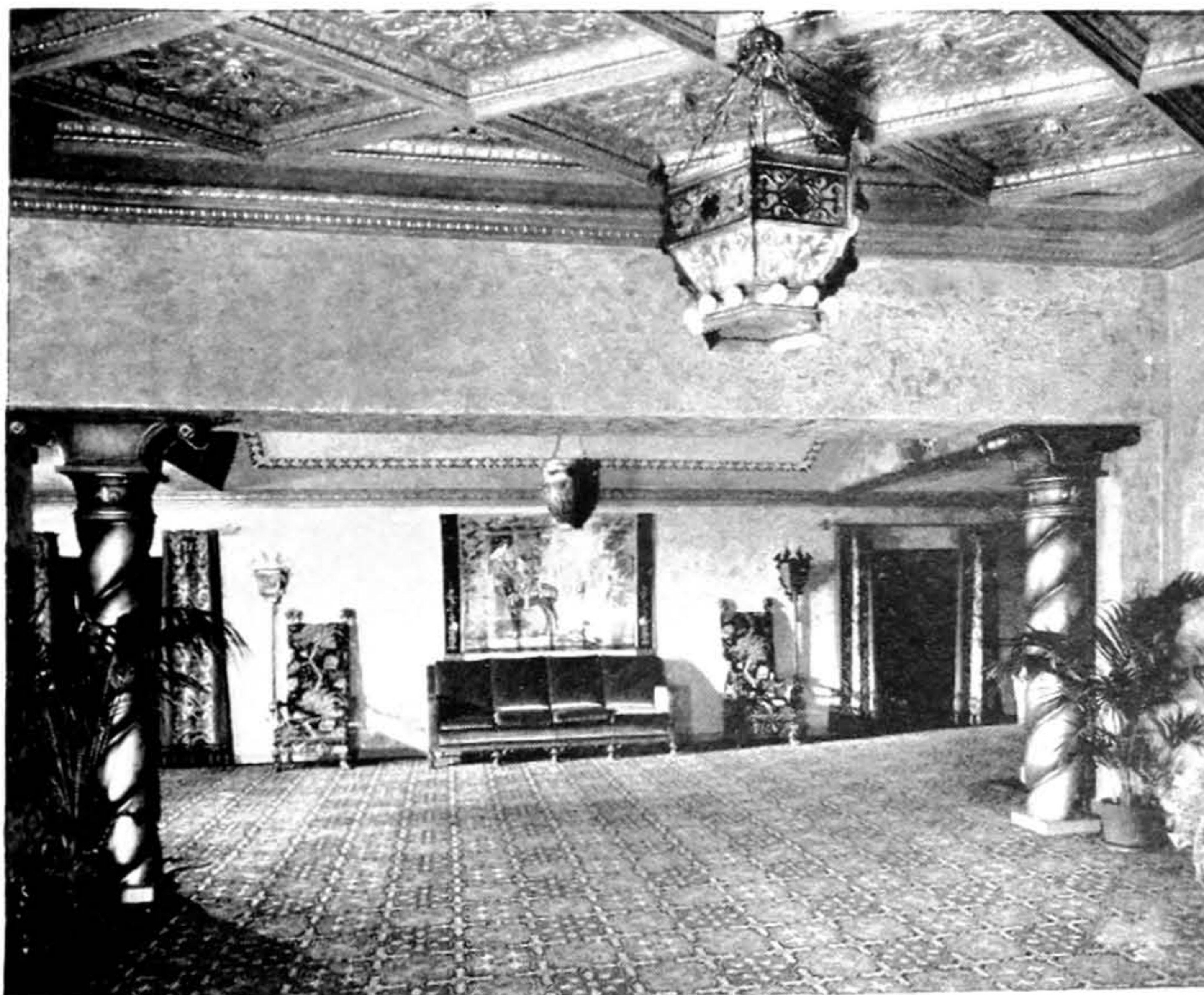
The auditorium has no balcony, and the walls do not carry any ornate "ginger - bread" decorations. The decorative scheme is carried out, unobtrusively, through the medium of the two organ grilles, the proscenium, the

ceiling vents, the modern metal chandeliers, the exit door lintels and the wall sconces. On the whole there is a restful simplicity in the interior design.

Seating capacity is provided for 1176 patrons, the parquet proper having in its three sections a total of 976 seats, while five-row sections at the rear provide 210 loge armchairs.

Unit equipment planned on the by-pass plenum system provides for ventilation and heating, the fresh or heated air coming into the auditorium through mushroom grilles, while the foul air is drawn through the four ceiling vents by a fan-and-blower installation.

The auditorium, 86 feet in width, 96 feet in length and approximately 36 feet in height to the peak of the ceiling, has been planned to afford the best possible control of the acoustics. The walls and ceilings are finished in a special pliable acoustic plaster, and the aisles are heavily carpeted to prevent the slightest echo. There is not the least reverberation.



*Foyer Lounge*