

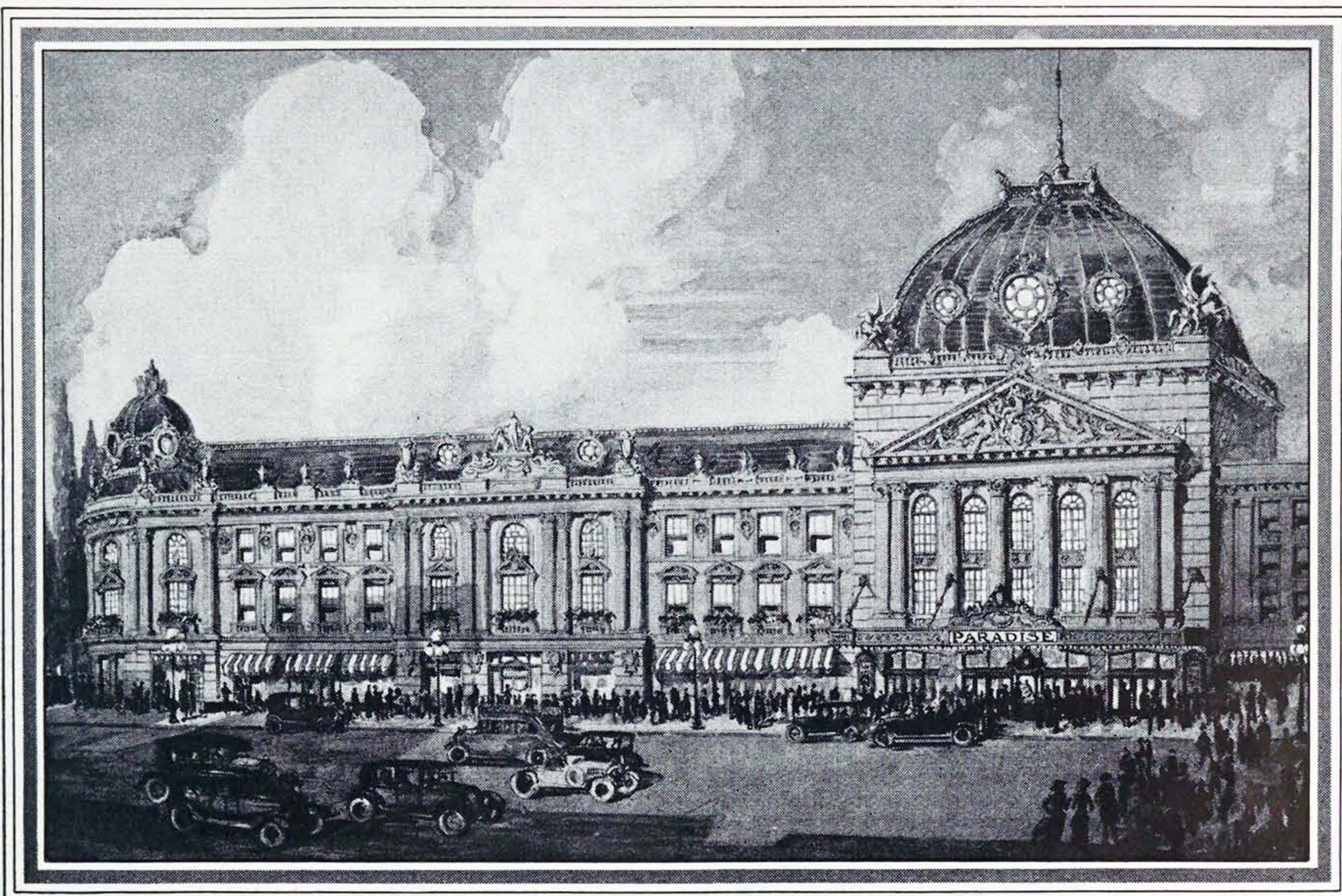
150 Pounds Pressure



CRANE VALVES



2500 Pounds Pressure



Paradise Theater, Crawford Avenue and West End Avenue, Chicago, Ill. Plumbing materials supplied by Crane. Architect, John Eberson, Chicago. General contractors, Lind Construction Co. Plumbing contractor, G. Albin Nilson. Heating contractors, W. S. Ray Manufacturing Co.

PLUMBING FOR THE LAND OF DREAMS

For millions of monotonous, work-filled, worry-ridden lives, the doors of the motion picture theater swing open into a land of no-matter-how-impossible dreams. Into the unfettered thrill of bold adventuring, the silken couches of languorous luxury, the soft music of love in spring, the elusive light of beauty, and the lure of far romance.

To create a setting worthy of the dream, architects who specialize in theater building, prosaically plan. An exterior promis-

ing unaccustomed delight; foyer, auditorium, and retiring rooms worthy of princess and hero on holiday; nothing anywhere dimaying the precious, fugitive illusion.

To such planning, Crane plumbing fixtures, valves and fittings have been found to be exceptionally well adapted. Graceful lines of fixtures fitting harmoniously into the decorative scheme; valves and fittings mechanically perfect and trouble free; leave no flaw to break the delicate thread.

CRANE

Address all inquiries to Crane Co., Chicago

GENERAL OFFICES: CRANE BUILDING, 836 S. MICHIGAN AVENUE, CHICAGO

Branches and Sales Offices in One Hundred and Fifty-five Cities

National Exhibit Rooms: Chicago, New York, Atlantic City, San Francisco and Montreal

Works: Chicago, Bridgeport, Birmingham, Chattanooga, Trenton, Montreal and St. Johns, Que.

CRANE EXPORT CORPORATION: NEW YORK, SAN FRANCISCO, MEXICO CITY, HAVANA

CRANE LIMITED: CRANE BUILDING, 386 BEAVER HALL SQUARE, MONTREAL

CRANE-BENNETT, LTD., LONDON

CIE CRANE: PARIS, BRUSSELS