

# The Deluxe Idea in a Theatre of Only 700 Seats

THE NEW Russell theatre in Maysville, Ky., is an excellent example of the manner in which the small theatre may be given large theatre facilities and embellishment, merely on a much smaller scale. Though seating but 700, the Russell carries out the full intent of a period, atmospheric pattern, while it has been given, on a reduced scale, complete lounge and foyer facilities, besides, of course, the most modern equipment for presentation of screen entertainment.

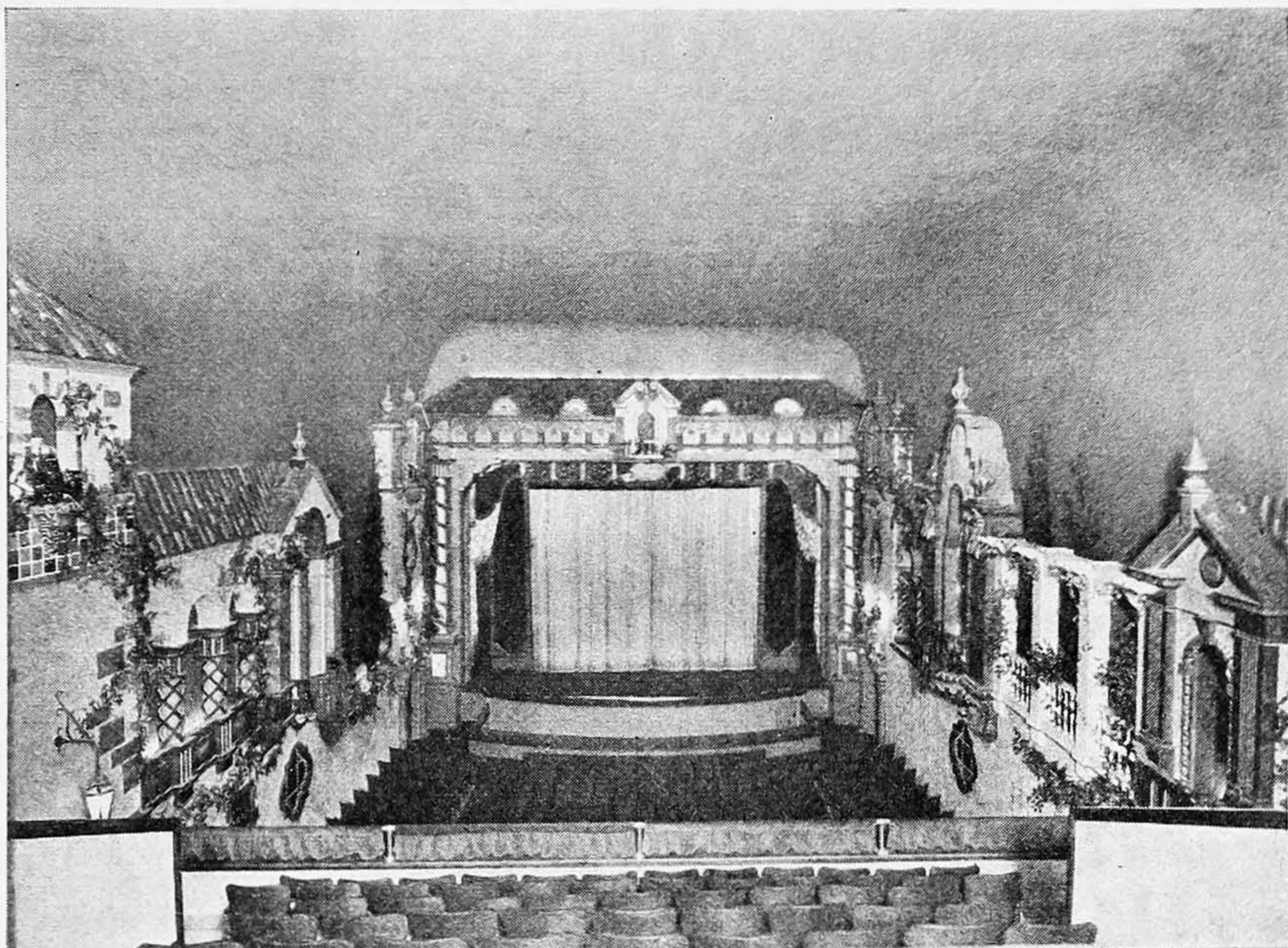
The Russell is operated by Lillian Armstrong Russell, James B. Russell and J. Barbour Russell, Jr., the latter being the manager. It was designed by Frankel & Curtiss, architects, of Lexington, Ky.

The exterior, pointed with Spanish motifs, is done in polychrome terra cotta and brick, the latter being applied in three shades of buff. At the upper part of the facade are arches bordering backgrounds of blue, which give a sky effect. This portion is flood lighted at night.

The floor of the lobby is tiled. The main foyer just inside has a beamed ceiling and lighting fixtures of the candle type. A Spanish decorative note is added in the grouping of a table, a mirror and two chairs in front of a Fortuna print. Off the foyer is a small lounge for women and a retiring room for men.

The auditorium is atmospheric, being done in a Spanish garden pattern executed in variegated plaster in relief. The main floor seats 400, while the balcony seats 300. Part of the balcony is given over to a section for colored patrons, and there are retiring rooms for them on this floor also. Seating is by Heywood-Wakefield.

Other equipment includes Western Electric sound apparatus, Simplex projectors with Peerless high intensity arcs, a Vitascope screen, Westinghouse motor generator and carpeting by Mohawk.



The auditorium from the balcony, showing in the forward wall and proscenium arch decorations the Spanish treatment in relief, giving a garden effect under an atmospheric ceiling.



General view of the exterior and facade. The building is faced with polychrome terra cotta and three shades of buff-colored brick. Flood lighting and lighting effects are provided for.