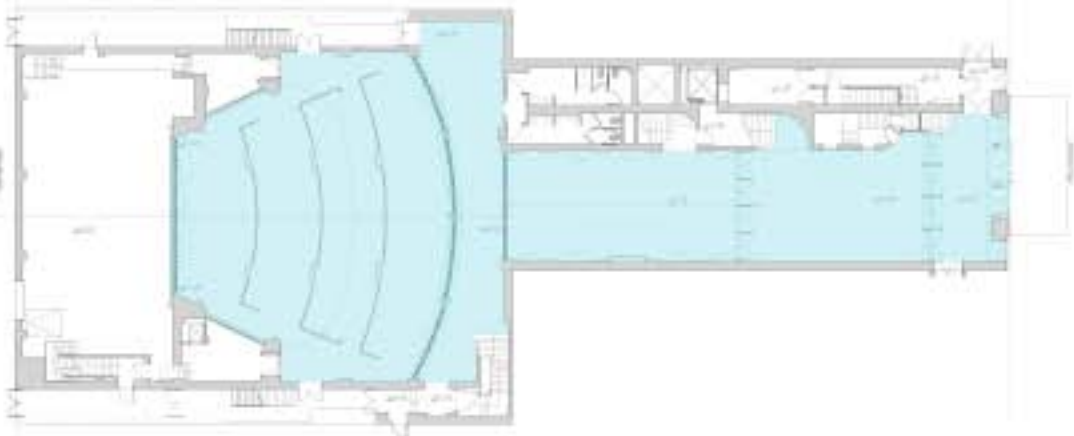
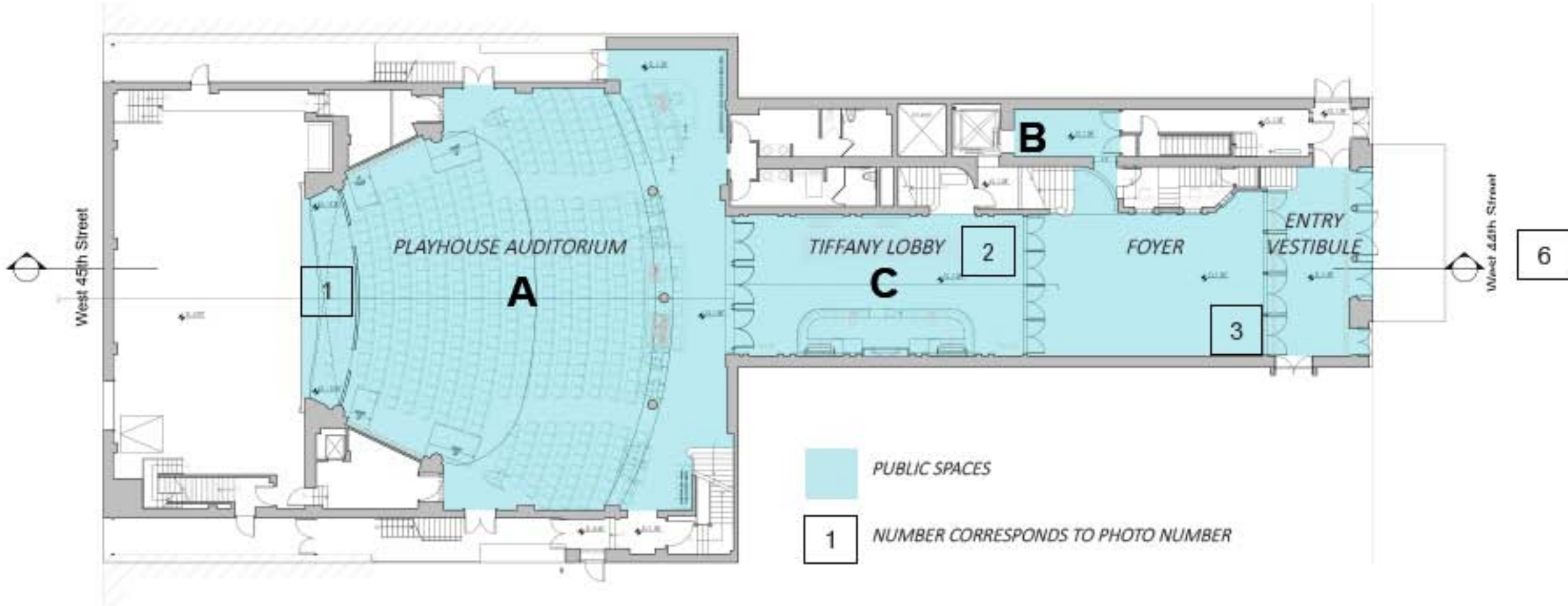


HUDSON THEATRE *New York NY*
FIRST FLOOR PLAN (ORCHESTRA)



EXISTING FIRST FLOOR PLAN

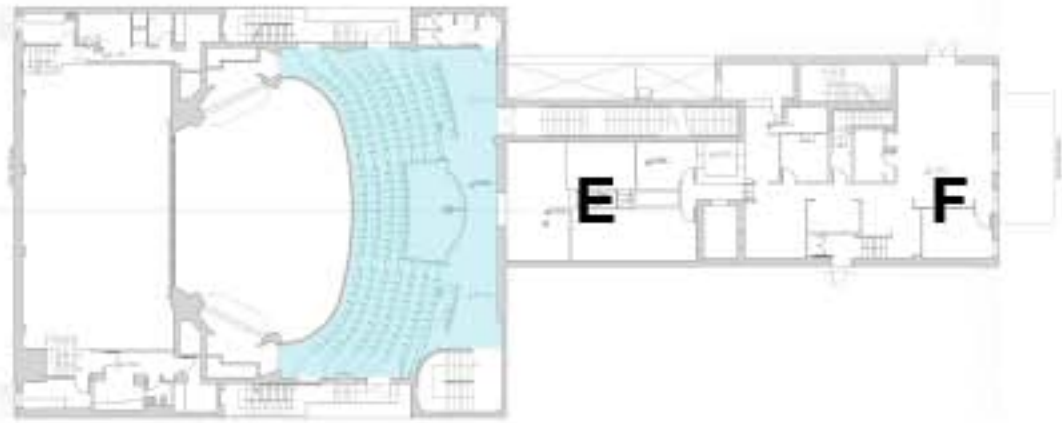
- A** NEW CUSTOM CHAIRS + SEATING ARRANGEMENT (INCL. ADA POSITIONS) + CARPET
- B** NEW ADA ELEVATOR ACCESS
- C** RESTORED TIFFANY LOBBY + NEW BAR + NEW ACOUSTICALLY ISOLATED DOORS (NORTH)



NEW CONSTRUCTION FIRST FLOOR PLAN
 SCALE 1/8" = 1'-0"

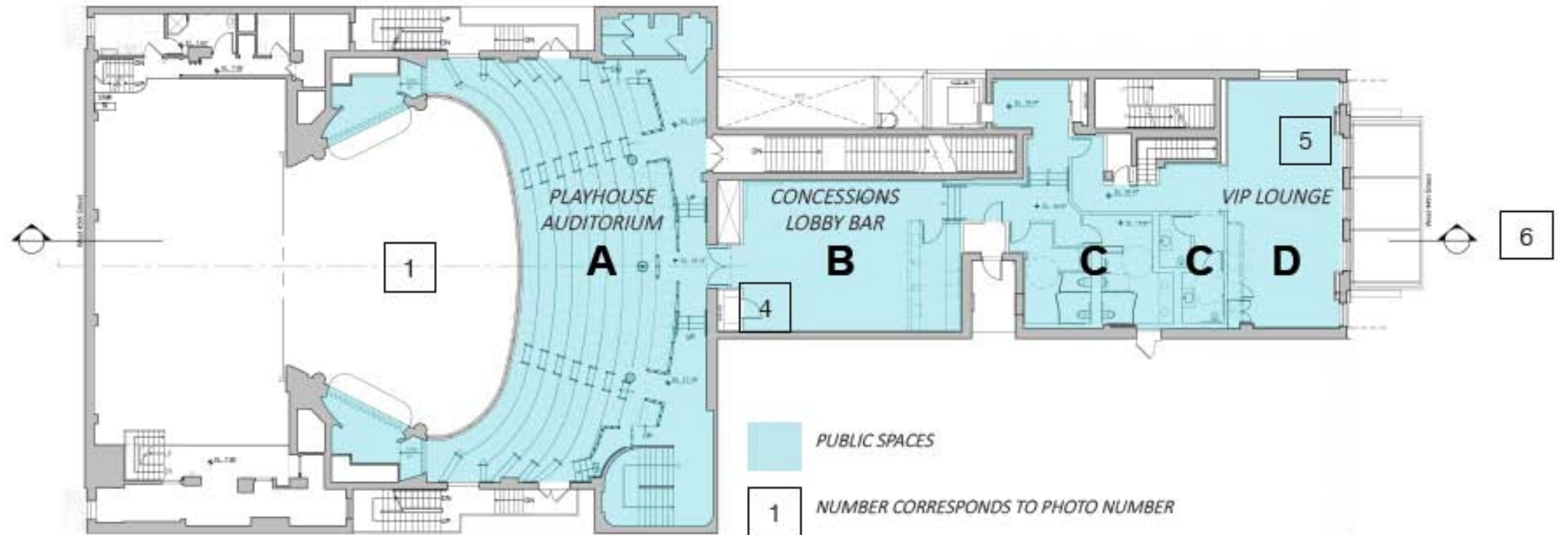


HUDSON THEATRE *New York NY*
SECOND FLOOR PLAN (1ST BALCONY)



EXISTING SECOND FLOOR PLAN

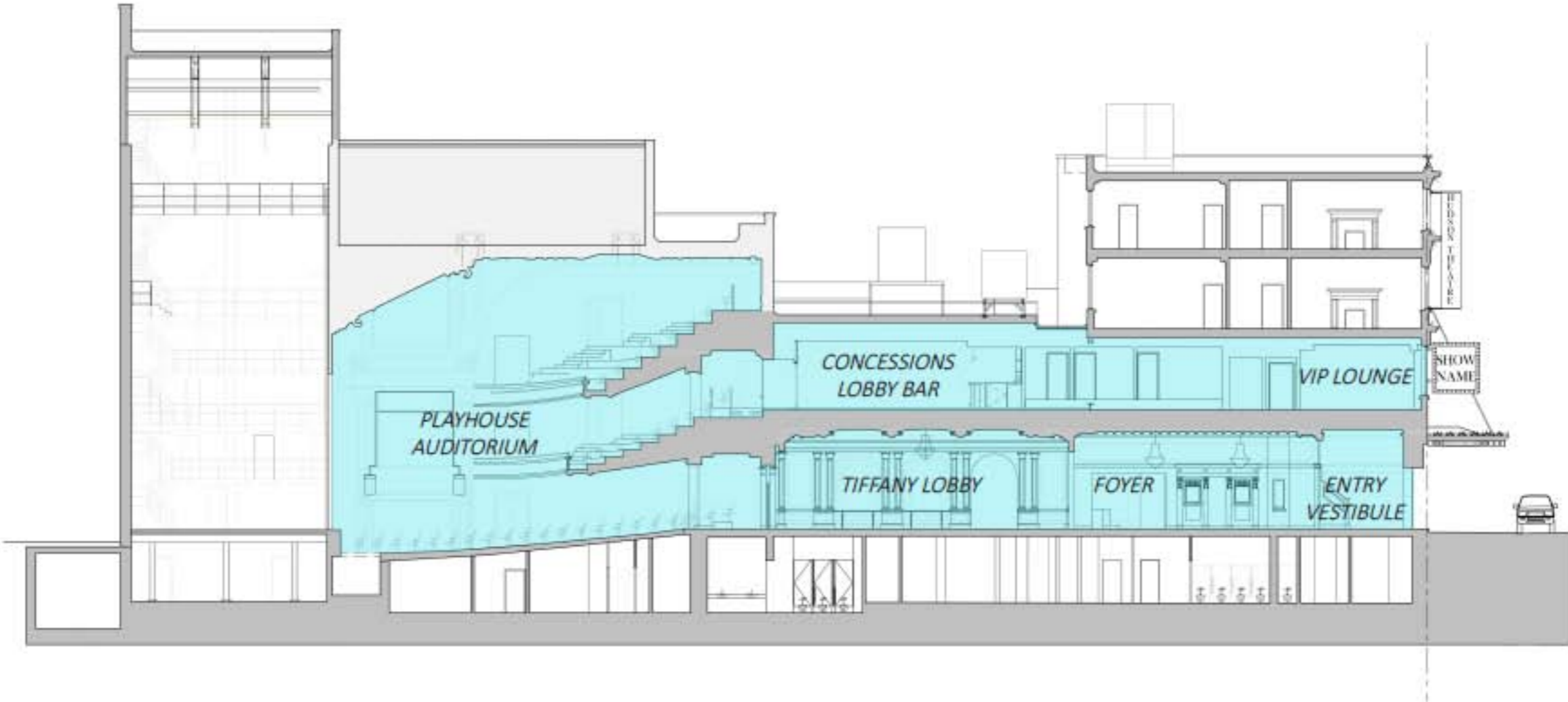
- A** NEW CUSTOM CHAIRS + SEATING ARRANGEMENT + CARPET
- B** NEW LOBBY + BAR
- C** NEW PUBLIC RESTROOMS
- D** NEW VIP LOUNGE + BAR
- E** FORMER MECHANICAL ROOM
- F** FORMER OFFICES



NEW CONSTRUCTION SECOND FLOOR PLAN (ADDITION OF 2580 SQ FT OF PUBLIC SPACES)
 SCALE 1/8" = 1'-0"



HUDSON THEATRE *New York NY*
LONGITUDINAL SECTION N-S



SCALE 1/8" = 1'-0"