

# MOVIES RETURN TO KANSAS CITY SHOWCASE



Looking down from the grand staircase to the balcony, the luxurious decor of the Saxon lobby is quite evident. Polished wood paneling, crystal chandeliers and thick carpet set the tone. The entranceway is outlined by the solid section of red carpet and the surrounding carpet is a floral design with a beige background and red motif. Above the entrance doors and to the right may be seen sections of the cast iron grillwork which is in gold and forms a railing around the balcony promenade.

**M**OTION PICTURES are again being shown in the former Midland Theatre in Kansas City, Mo., lush movie palace that delighted theatregoers for more than three decades until a recent brief period when it was converted to a professional bowling arena.

Furthermore, not one, but two theatres are operating under its roof. The Saxon which seats approximately 1,600 persons, will utilize the former Midland auditorium and have its entrance on the original Main street side. Under this space, in a large lounge area, is the Studio, an intimate art theatre with a capacity of 150. The Studio has its own entrance off Thirteenth street around the corner.

New marquees were installed over both theatre entrances and rough stone planters enhance the areas.

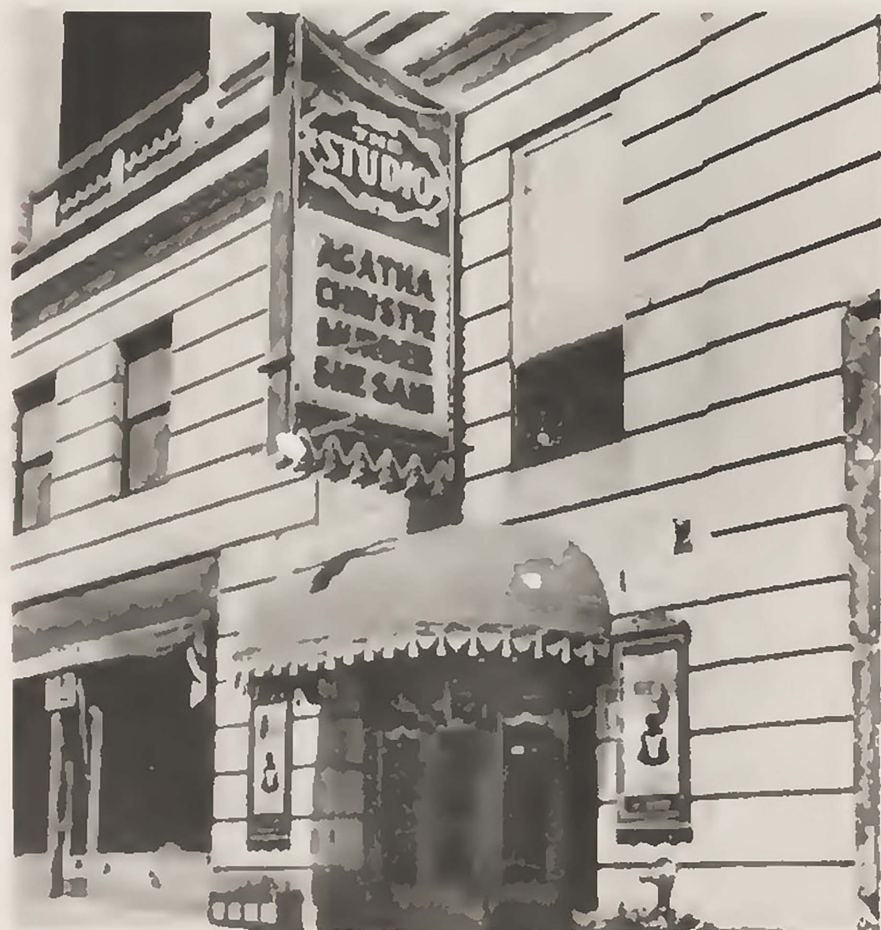
Durwood Theatres, Inc., which took over the lease of the former Loew's theatre, emphasized restoration of the original Mid-



A new marquee was erected over the entrance of the former Midland Theatre, now the Saxon, in Kansas City, Mo., and a canopy bearing the theatre name suspended beneath it. The color scheme is green and gold. The boxoffice remains in the center, but rough stone planters were added on either side.



Draperies which cover the entire front of the Saxon auditorium and curve around to the sides are bittersweet-hued. New green aisle carpet runners were laid, and the seats which had been removed from the front during the bowling conversion were replaced. Seats in the first 30 rows were more widely spaced.



The same green and gold color motif of the Saxon marquee was repeated in that of the Studio, as were the brick planters. This entrance, around the corner from the Saxon, was formerly used as an exit from the old Midland Theatre.



The lobby of the Studio is done in gold and white flocked wallpaper and walnut paneling, and has the same floral carpet in beige and red as used in the lobby of the Saxon. The inside boxoffice is also decorated with the wallpaper and framed with walnut. A stairway at the left leads down to the 150-seat art theatre located in a former lounge area. There are also luxurious lounges and restrooms located on this lower level.