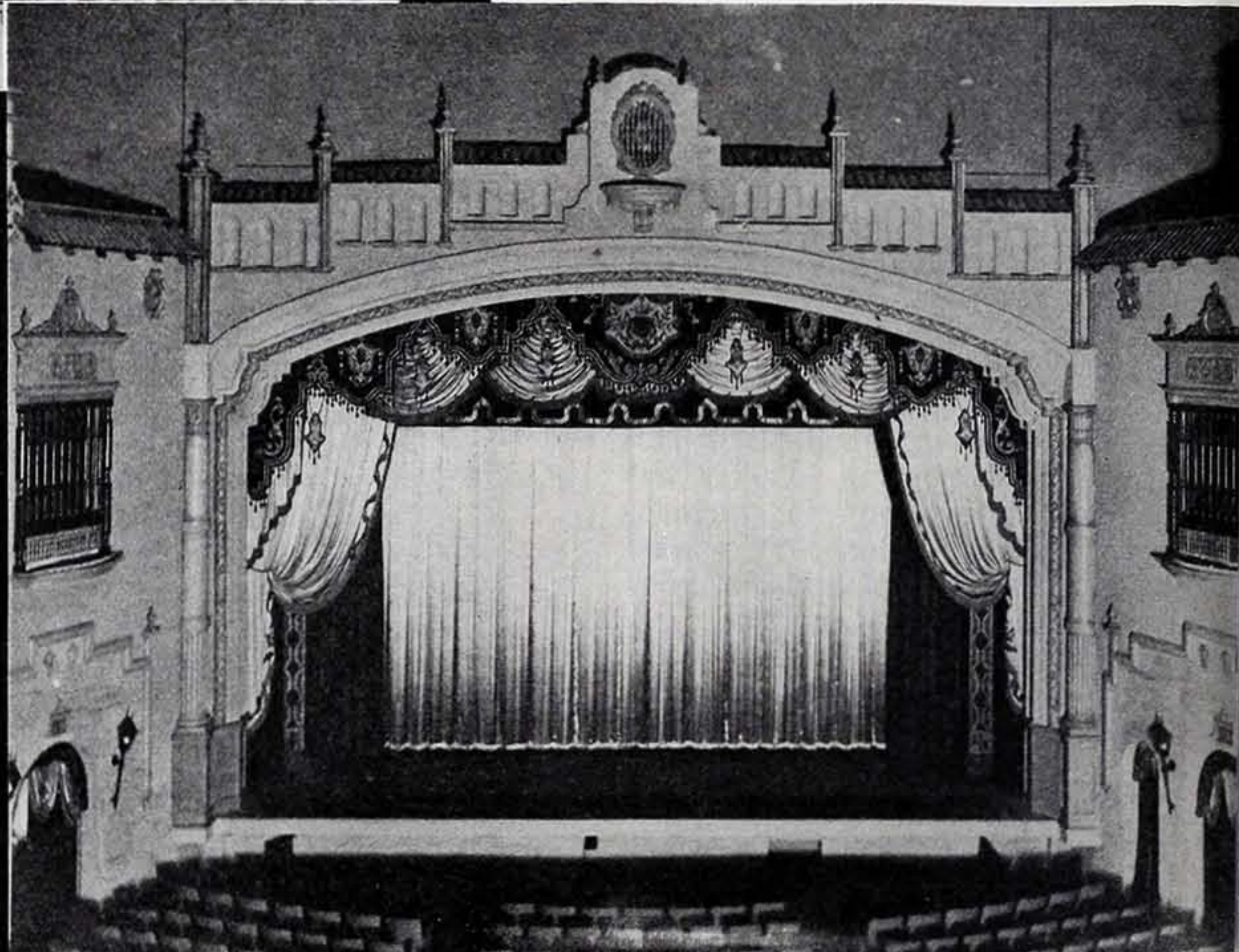


Above: View of the auditorium, looking toward the left wall, showing the general decorative treatment according to Spanish Renaissance motifs. Arches and balconies executed in plaster in relief carry out the decorative idea.

Right: Another view of the auditorium, this one showing the stage and proscenium arch, as seen from the balcony. All modeling is in plaster of soft blending tones and rough finish. The stage is rigged for big productions.

Below: Looking down one side of the mezzanine floor which leads to the lounges and to the balcony. The lounges are beneath the balcony. The walls, except for their variegated surface are unadorned. Floors are carpeted.

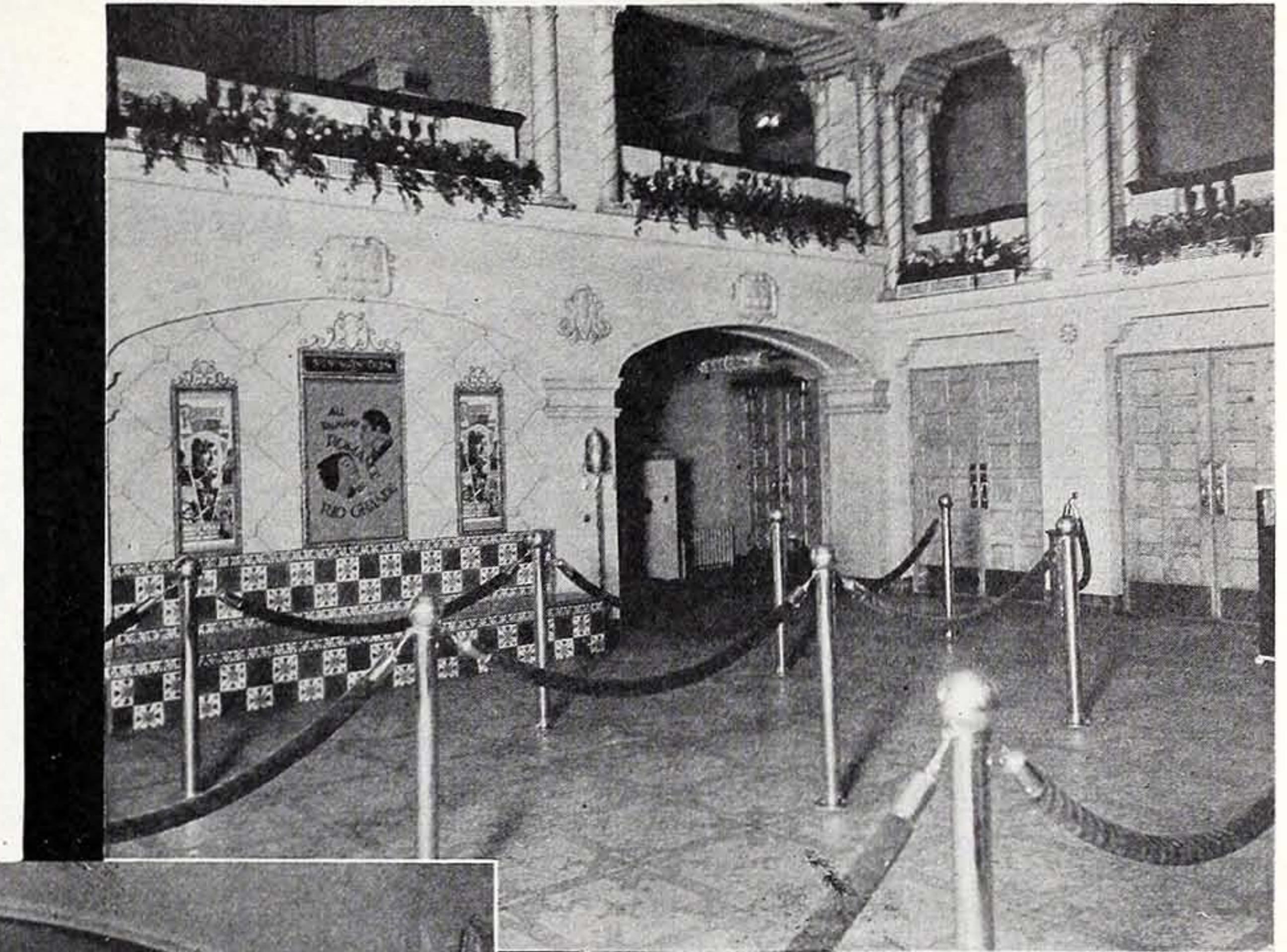


# The Texas Theatre In San Angelo, a Fine Small House

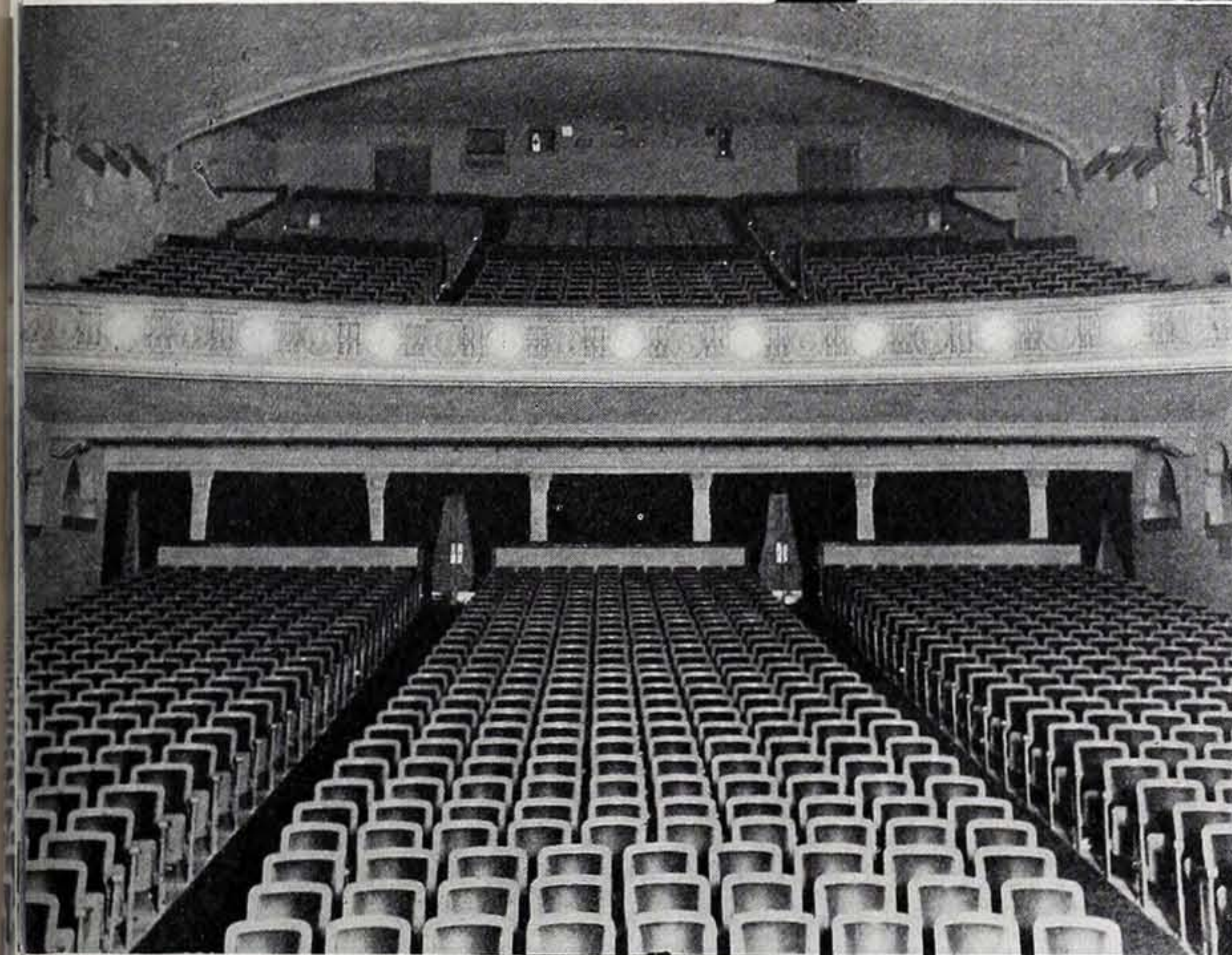
Though seating only 1,800, this new addition to the R & R-Public circuit adapts the essentials of the large picture palace. The architect was W. Scott Dunne

The Texas seats 1,800, with 500 seats in a balcony. To the rear of the auditorium is a mezzanine floor, which affords access directly from the foyer to the balcony and also space for lounges and retiring rooms. The latter are located beneath the balcony.

Decoration throughout the interior is executed in plaster of soft blending colors. The auditorium walls are done in relief, with the general lines carrying out the effect of a Spanish enclosure. Practically all equipment is by the National Theatre Supply Company. Exclusive of the equipment, the building cost about \$150,000.

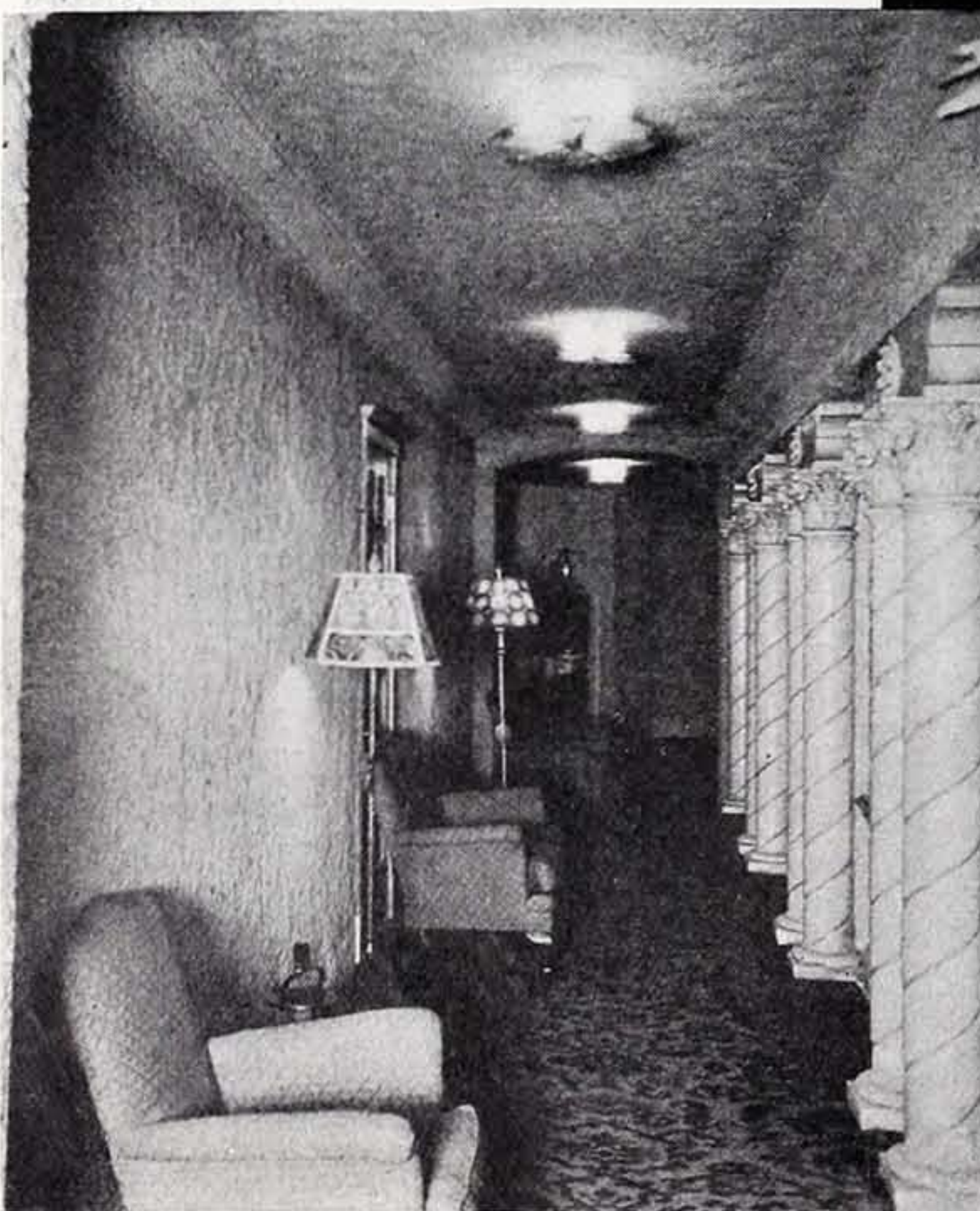


Above: The foyer, which is a combination of inner lobby and main foyer. On three sides is the mezzanine floor leading to the balcony and lounges. The floor is of tile, the walls of variegated plaster.



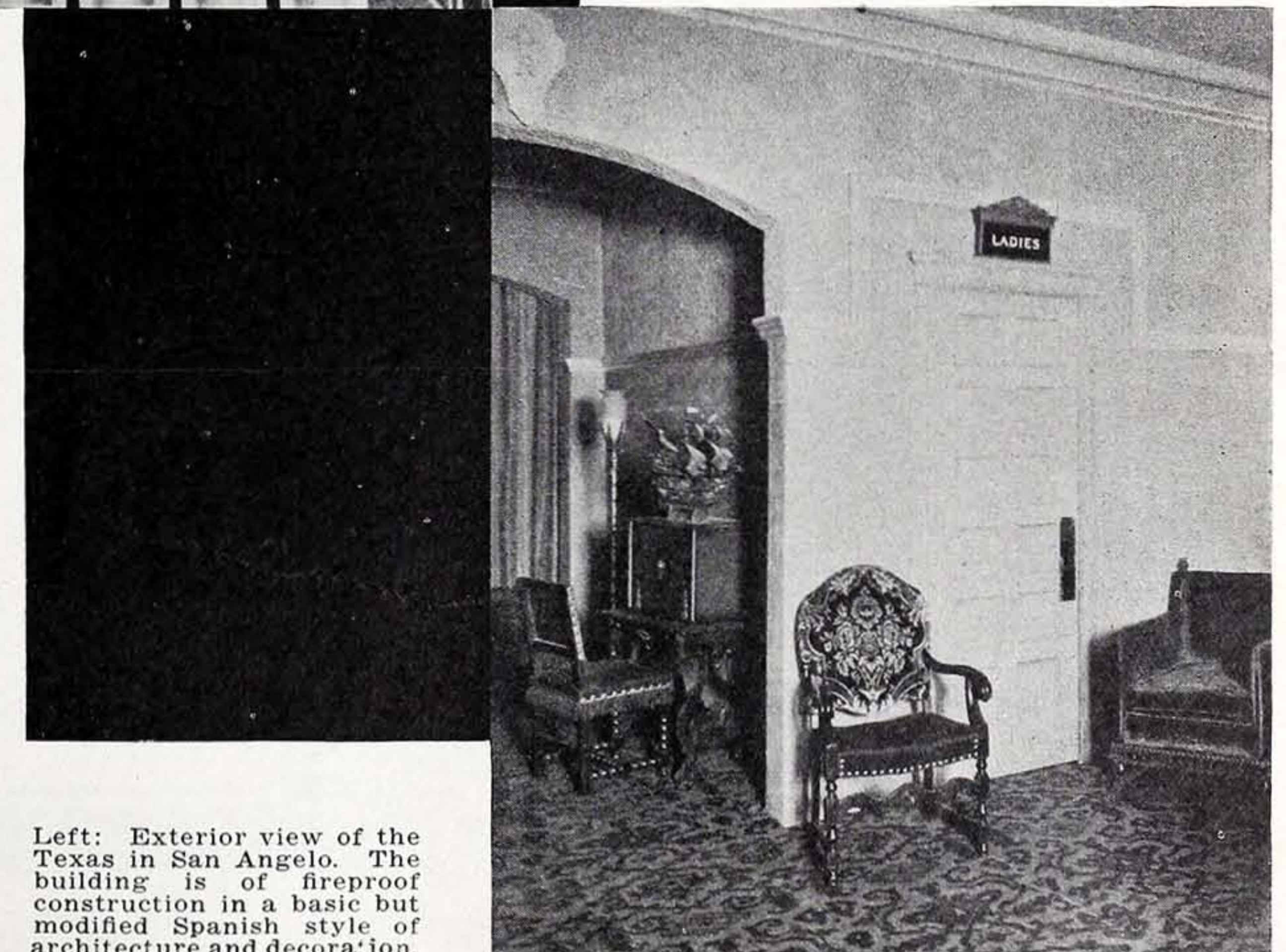
Left: The auditorium from the stage, showing the entire balcony with its channels of ingress and egress at the middle of the floor, the method developed by motion picture theatre architects to get greater seating area cheaply.

Below: A corner of the suite of lounges, as seen from the women's section. Simple, home-like appointments mark the decoration and furnishing of these rooms, which occupy most of the area under the upper reaches of the balcony.



ANOTHER interesting example of the relatively small theatre designed to meet both the aesthetic and utilitarian demands of modern deluxe motion picture theatre operation, furnished by the R & R circuit (Public affiliate) in Texas. This chain's Ritz theatre in Corpus Christi, opened just recently and disclosing a novel arrangement of auxiliary entranceways at the rear, was planned to meet the same conditions. This second representative of that class of theatres is the Texas in San Angelo, Tex. Like the Ritz, the Texas was designed by W. Scott Dunne of Dallas.

The building covers an area 60x19 feet and is of fireproof construction with a light brick exterior. The general architectural motif is Spanish Renaissance, though the exterior largely influenced by the consideration of harmony with modern surrounding



Left: Exterior view of the Texas in San Angelo. The building is of fireproof construction in a basic but modified Spanish style of architecture and decoration.